

Innovative Approaches to Support Agricultural Landscapes in Healthy Metropolises



New Partners for Smart Growth Conference
February 12, 2016

Julia Freedgood, American Farmland Trust
Greg Holmes, 1000 Friends of Oregon
Kathy Macpherson, Friends of the Greenbelt Foundation
Jeremy Madsen, Greenbelt Alliance



Working with Oregonians to enhance our quality of life by building livable urban and rural communities, protecting family farms and forests, and conserving natural areas.

OREGON LEGISLATIVE ASSEMBLY—1973 REGULAR SESSION

Enrolled
Senate Bill 100

Sponsored by Senators MACPHERSON, HALLOCK

CHAPTER: 30

AN ACT

Relating to land use; creating new provisions; amending ORS 215.055, 215.510, 215.515, 215.535 and 453.345; and appropriating money.

Be It Enacted by the People of the State of Oregon:

**PART I INTRODUCTION
PREAMBLE**

SECTION 1. The Legislative Assembly finds that:

(1) Uncoordinated use of lands within this state threaten the orderly development, the environment of this state and the health, safety, order, convenience, prosperity and welfare of the people of this state.

(2) To promote coordinated administration of land uses consistent with comprehensive plans adopted throughout the state, it is necessary to



GOAL 3: AGRICULTURAL LANDS

Agricultural lands shall be preserved and maintained for farm use, consistent with existing and future needs for agricultural products, forest and open space and with the state's agricultural land use policy.

**COLDWELL
BANKER**
COMMERCIAL

PRO WEST
REAL ESTATE

BERNARD YOUNG
Broker

(541) 779-4466

(541) 944-2086

18 ACRES

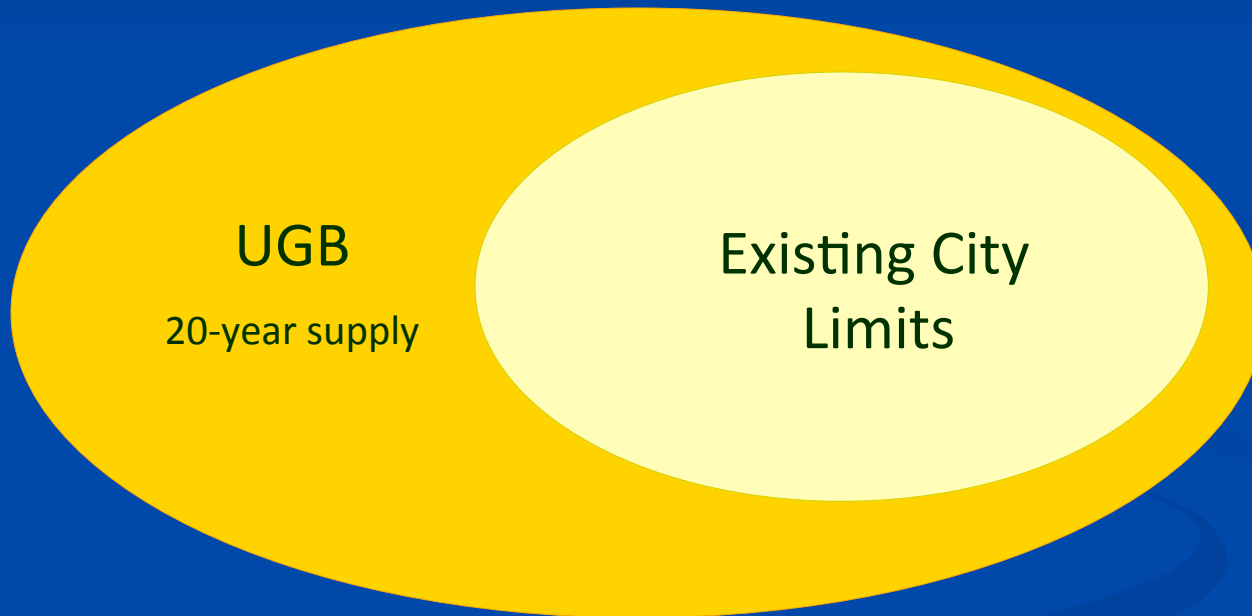
ZONED EFU


PRIME
DEVELOPMENT
PROPERTY

GOAL 14: URBANIZATION

To provide for an orderly and efficient transition from rural to urban land use, to accommodate urban population and urban employment inside urban growth boundaries, to ensure efficient use of land, and to provide for livable communities.

City Limits vs. Urban Growth Boundary



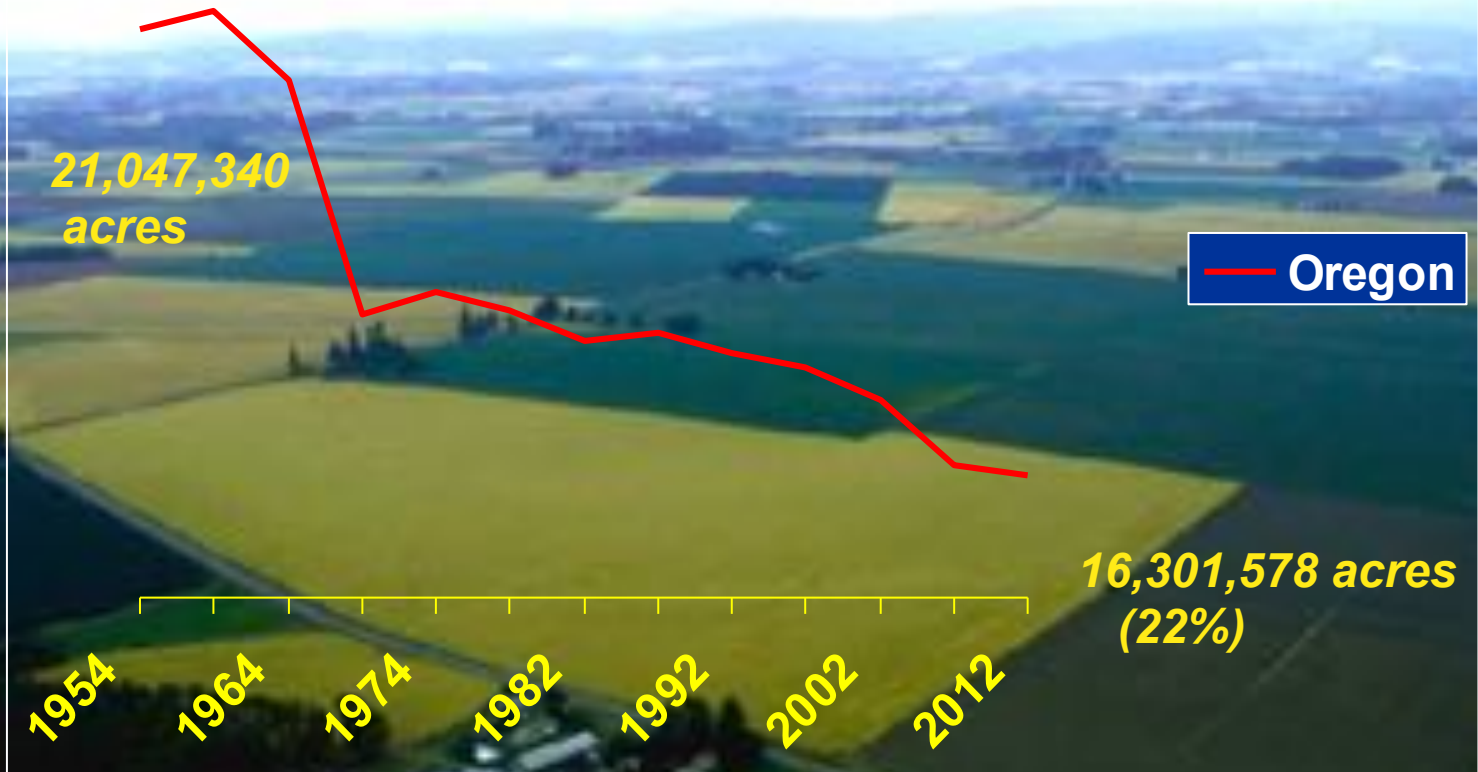


WE WANT TO EXPAND
THE URBAN GROWTH
BOUNDARY JUST ONE
MORE TIME...

...BUT THIS
IS ALASKA.

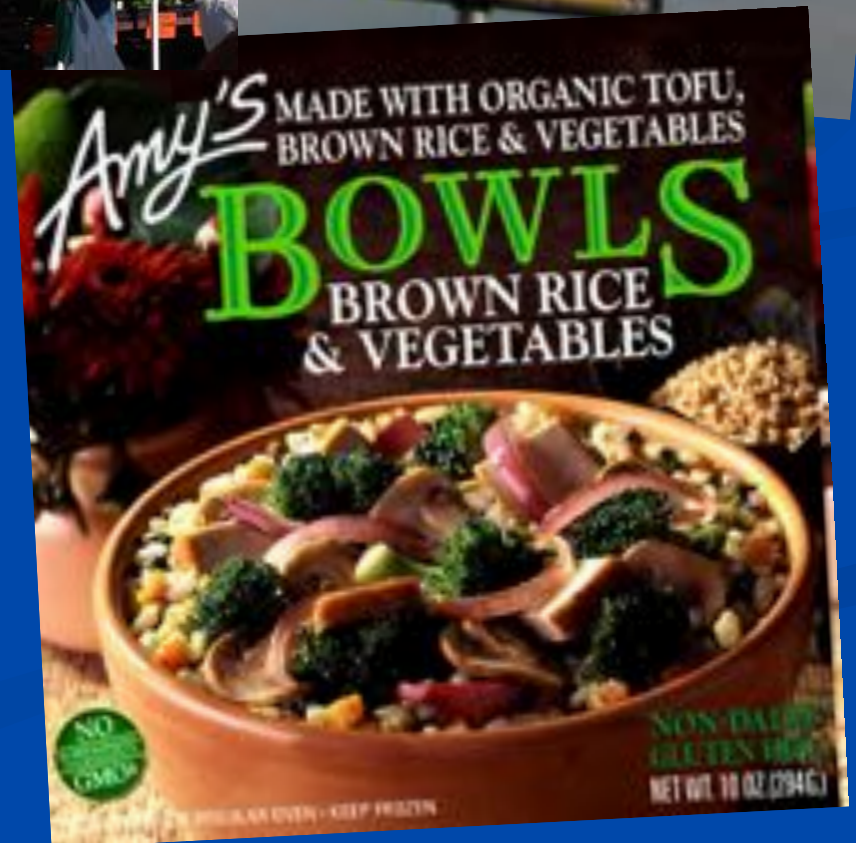
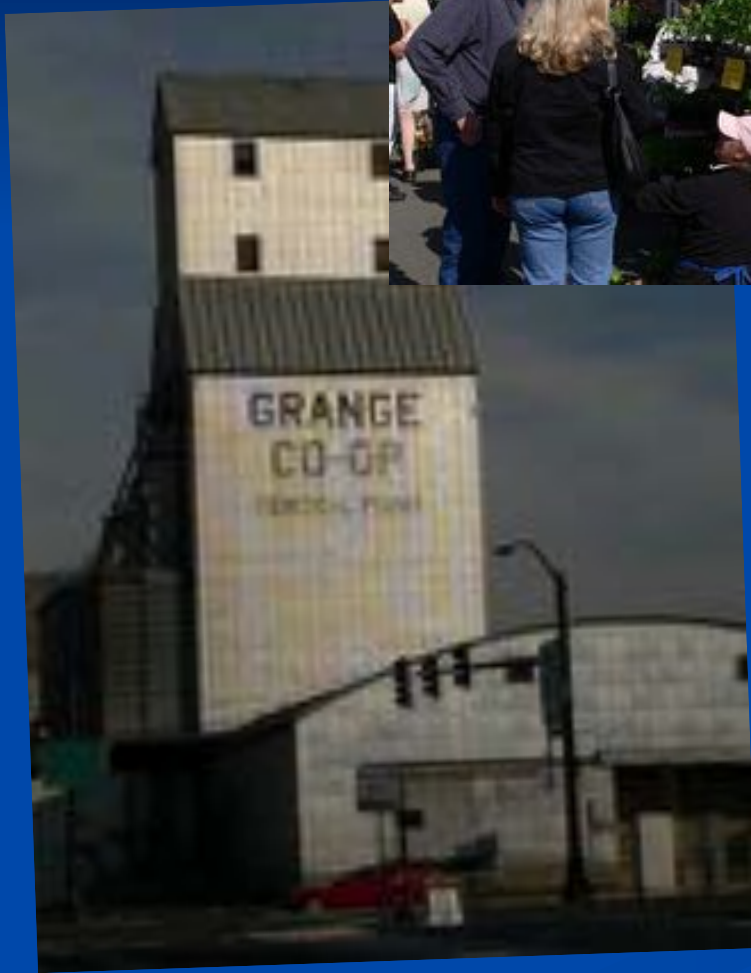
PDX
DEVELOPERS
INC.

Land in Farms: 1954-2012

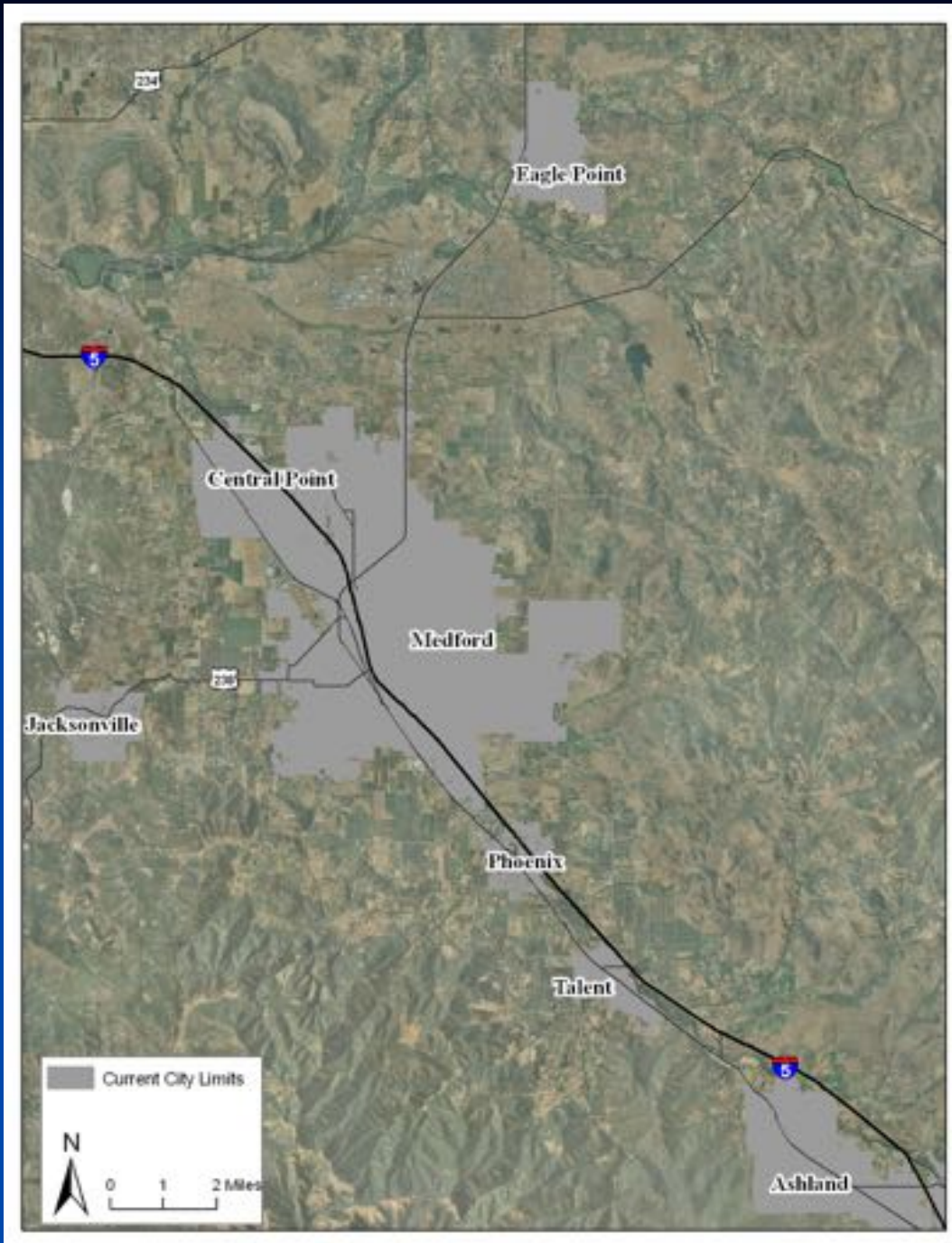


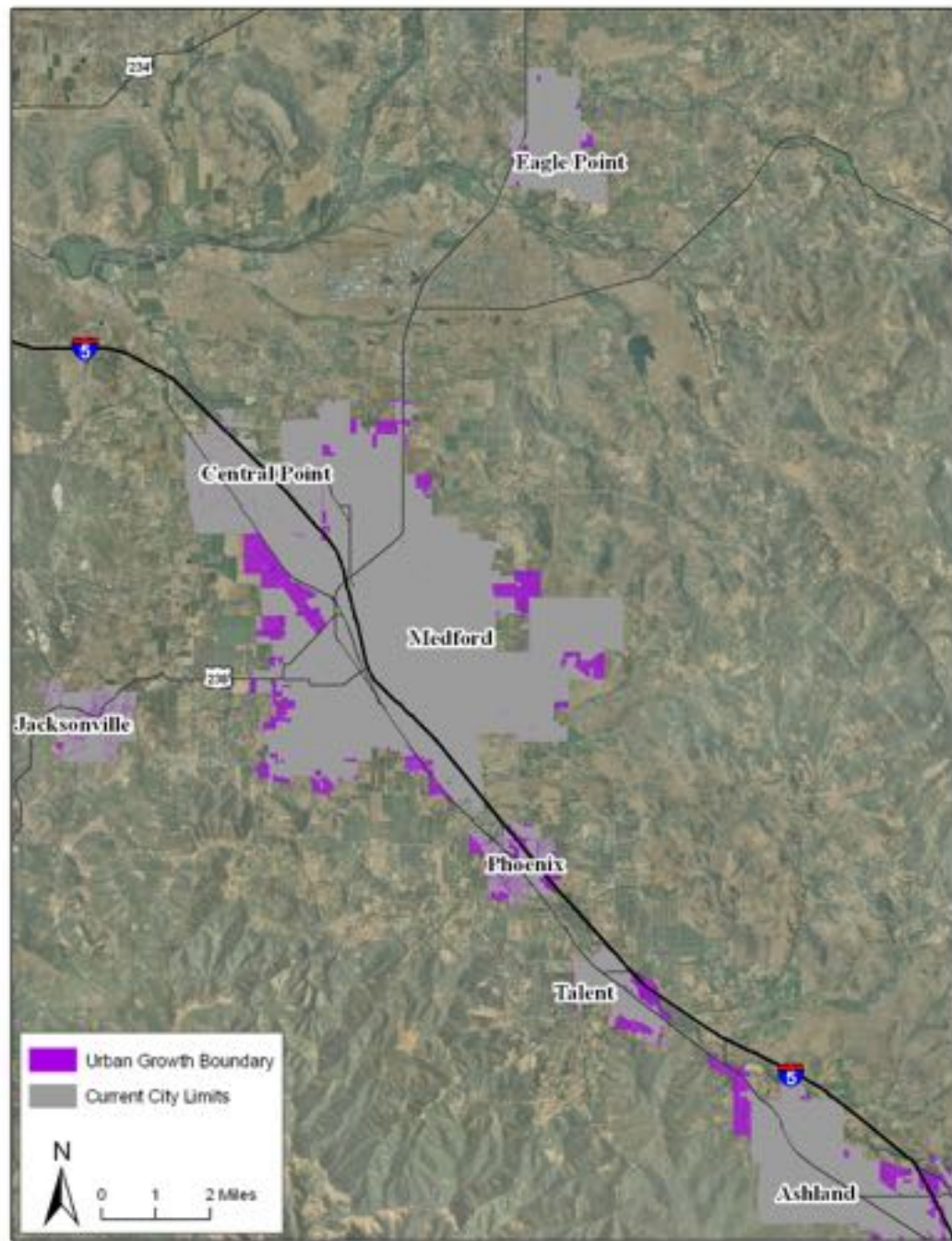
Source: U.S. Census of Agriculture

Harry & David



Gray Areas = City Limits

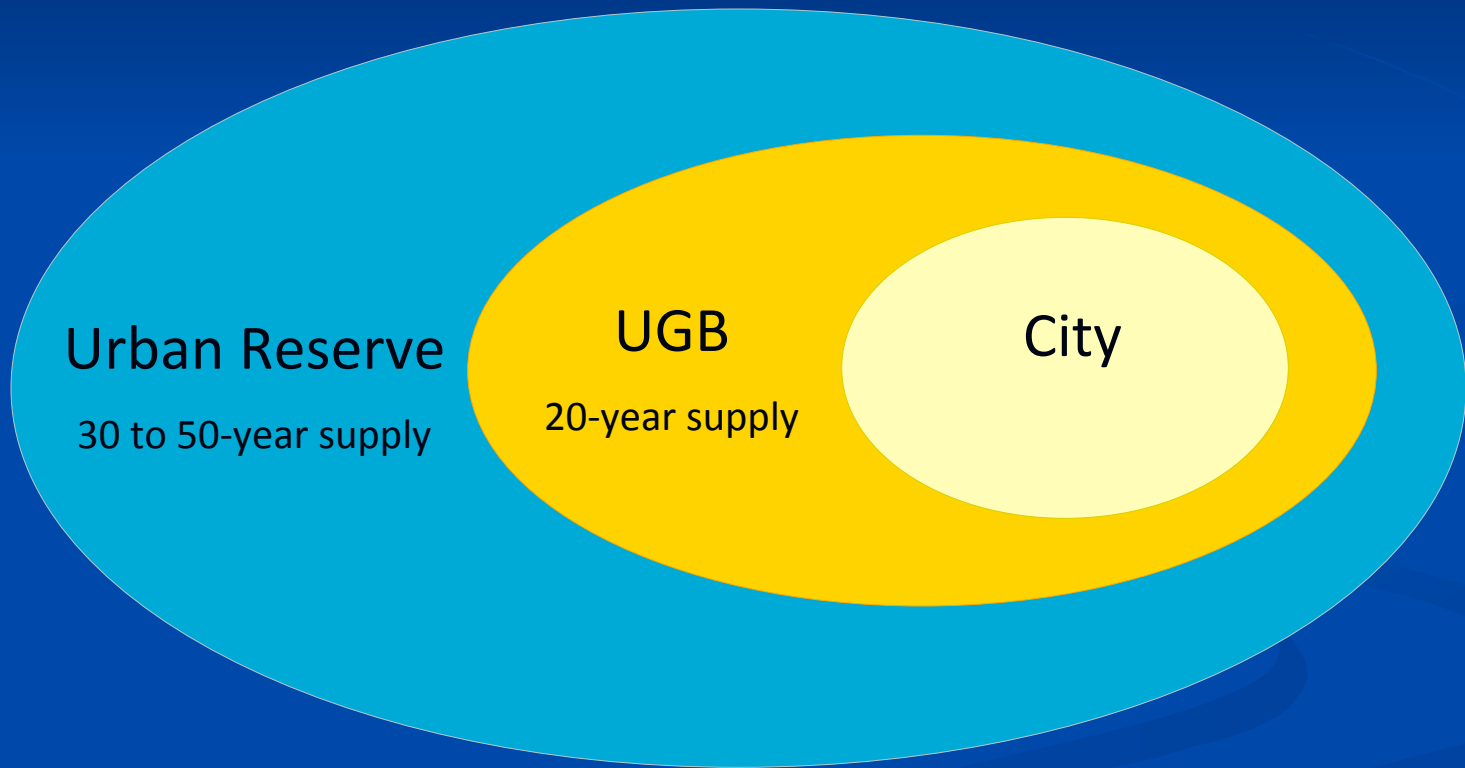




Gray Areas = City Limits

Purple Areas = UGB

City Limits, Urban Growth Boundaries and Urban Reserves

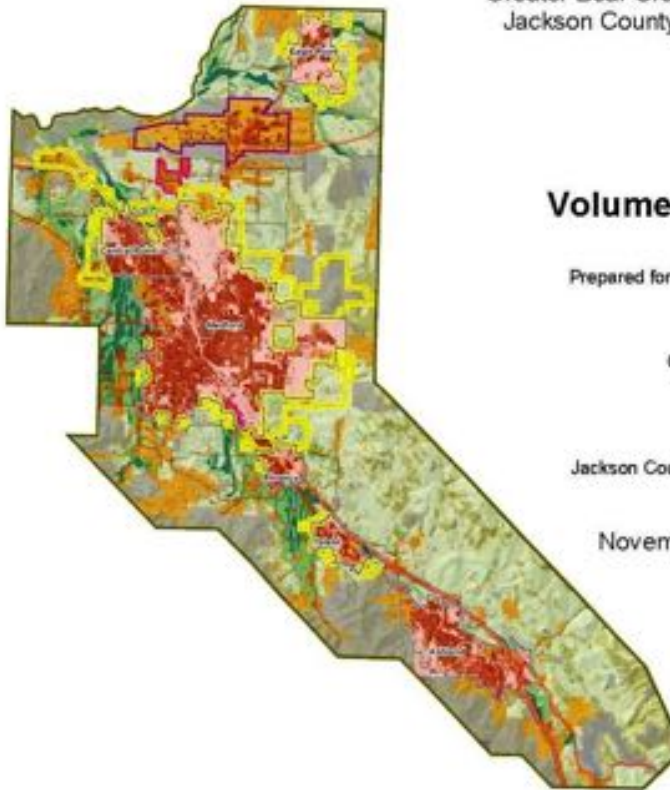


A Plan to Solve Regional Problems in Southern Oregon

Draft Regional Plan

for the

Greater Bear Creek Valley
Jackson County, Oregon



Volume 1 of 3

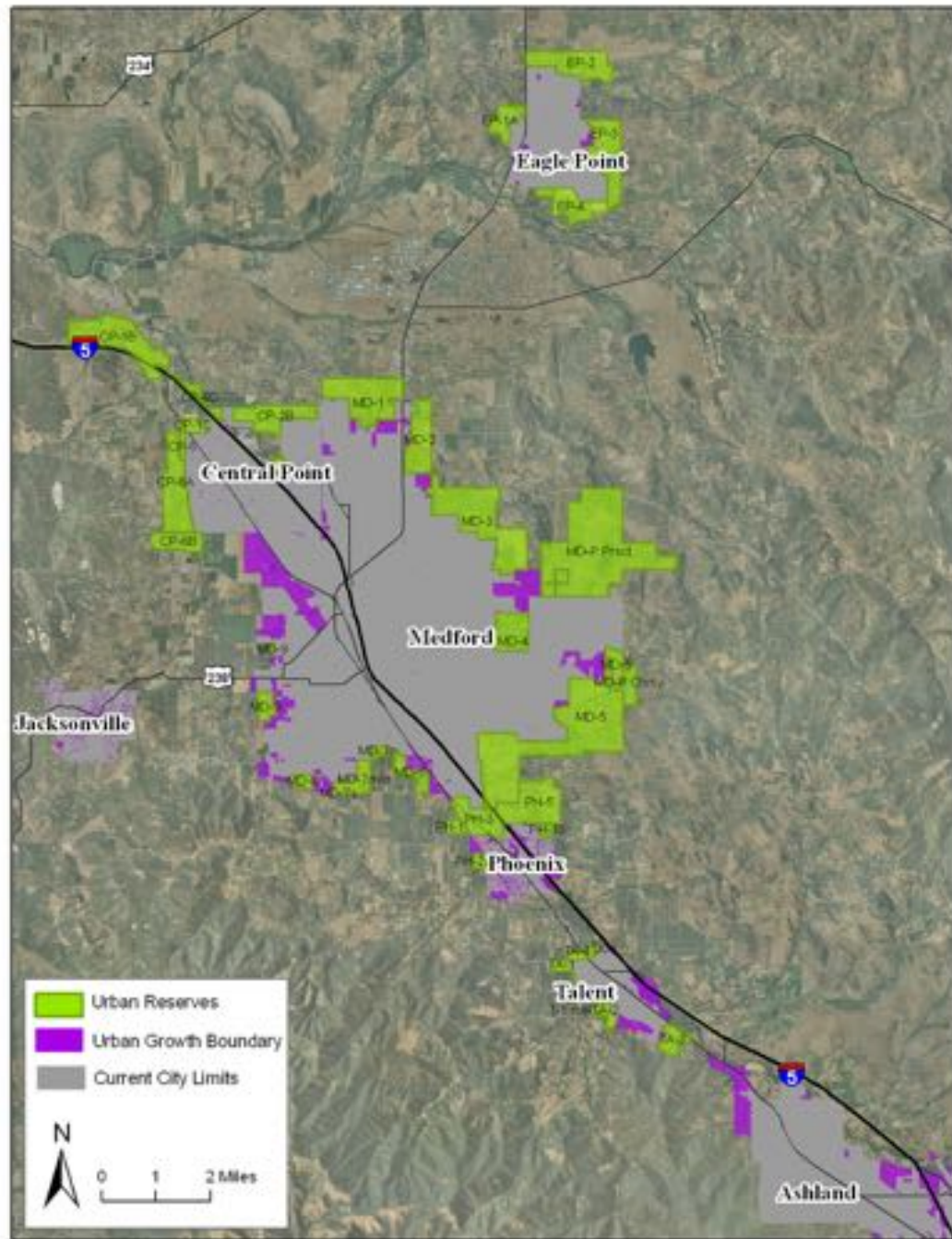
Prepared for the Cities of

Medford
Ashland
Central Point
Eagle Point
Phoenix
Talent
and
Jackson County, Oregon

November 2009

Took 12 years to develop

Will guide urban expansion
and redevelopment for 50
years or more



Gray Areas = City Limits

Purple Areas = UGB

Green Areas =
Future UGB







Mission

The Rogue Valley Food System Network establishes a collaborative community of leadership to develop and advocate for a healthy and sustainable food system in Josephine and Jackson Counties.





Greg Holmes
Food Systems Program Director

www.friends.org

greg@friends.org

www.rvfoodsystem.org

